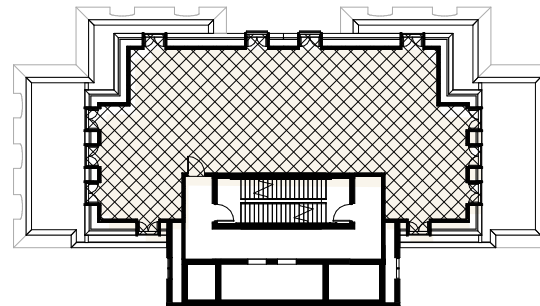
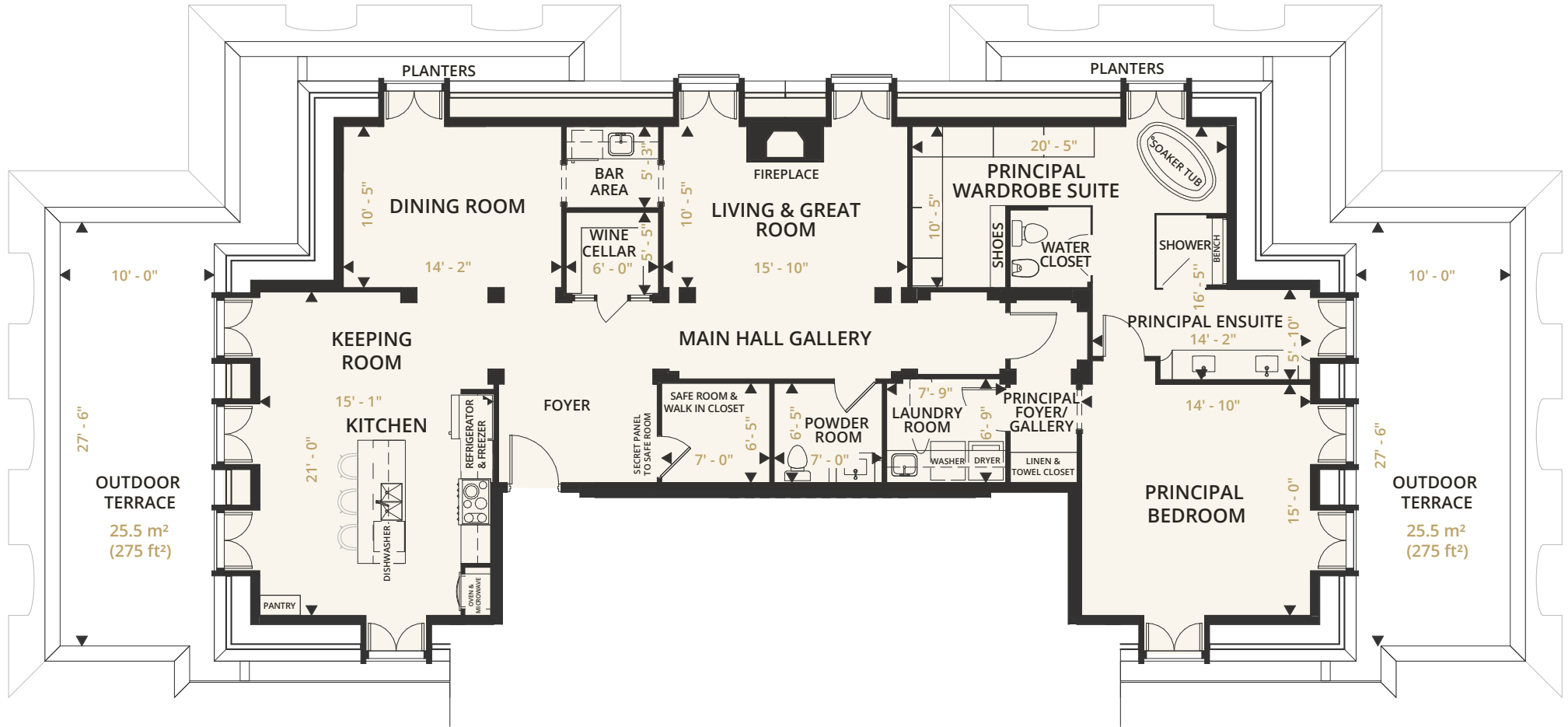




Isabella's Islay Suites



Isabella's Islay Suite



Floor: 11th
Units per floor: 1
Total # of units: 1
Area: 184.2 m² (1,983 ft²)
Terrace: 51 m² (550 ft²)
Bedrooms: 1 Master

Floor plans may be impacted with minor variances due to final construction plans based on code requirements. Floor plans of the residential units are for marketing purposes and are for guidance only. The units may be a reverse layout to plans shown. The units' dimensions, fixtures, fittings, finishes and specifications may change without notice, to the extent permitted by applicable law. The floorplans do not necessarily represent a true and accurate depiction of the finished condominium unit. All images and dimensions are not intended to form part of any contract or warranty and the floor plans are governed by the website's Terms of Use.



THE
ISABELLA
RESIDENCES

The Isabella Residences
28 Dorset Street
Waterloo, Ontario Canada N2L 3L5

E connect@theisabella.ca
T 519 208 9533
www.Theisabella.ca



Boutique Living in the Jewel of the City