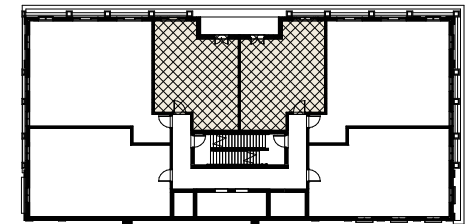
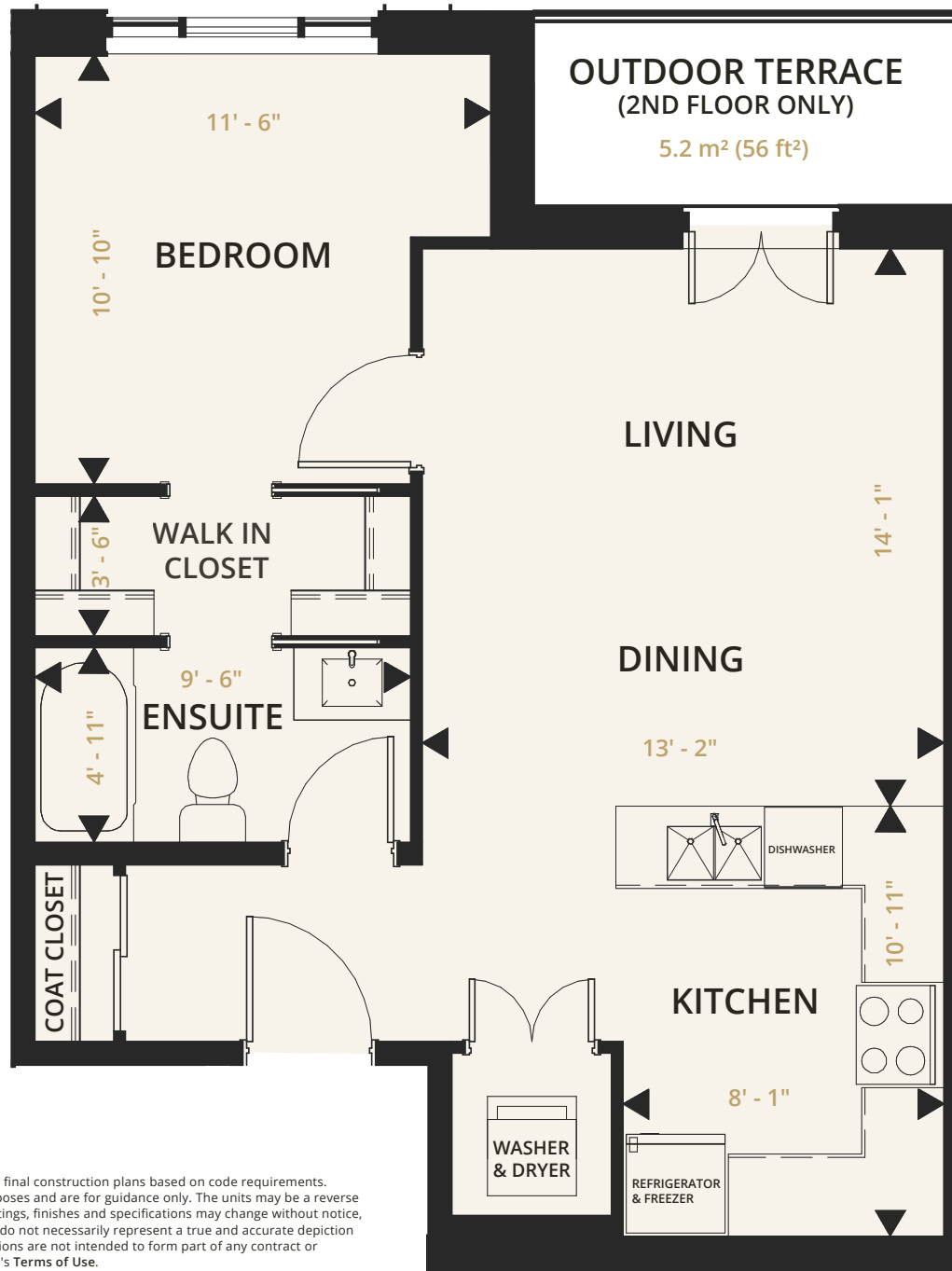




Bonniefield Suites



# Bonniefield Suites



**Floor:** 2nd - 6th  
**Units per floor:** 2  
**Total # of units:** 10  
**Area:** 59.9 m<sup>2</sup> (645 ft<sup>2</sup>)  
**Terrace:** 5.2 m<sup>2</sup> (56 ft<sup>2</sup>)  
**Bedrooms:** 1

Floor plans may be impacted with minor variances due to final construction plans based on code requirements. Floor plans of the residential units are for marketing purposes and are for guidance only. The units may be a reverse layout to plans shown. The units' dimensions, fixtures, fittings, finishes and specifications may change without notice, to the extent permitted by applicable law. The floorplans do not necessarily represent a true and accurate depiction of the finished condominium unit. All images and dimensions are not intended to form part of any contract or warranty and the floor plans are governed by the website's Terms of Use.



THE  
**ISABELLA**  
RESIDENCES

**The Isabella Residences**  
28 Dorset Street  
Waterloo, Ontario Canada N2L 3L5

**E** [connect@theisabella.ca](mailto:connect@theisabella.ca)  
**T** 519 208 9533  
[www.Theisabella.ca](http://www.Theisabella.ca)



**Boutique Living in the Jewel of the City**